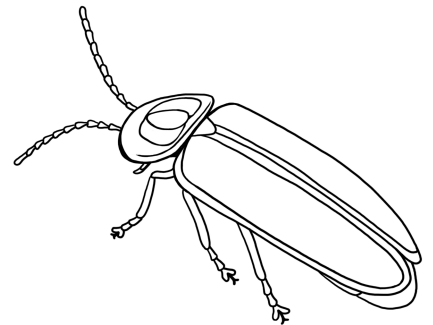
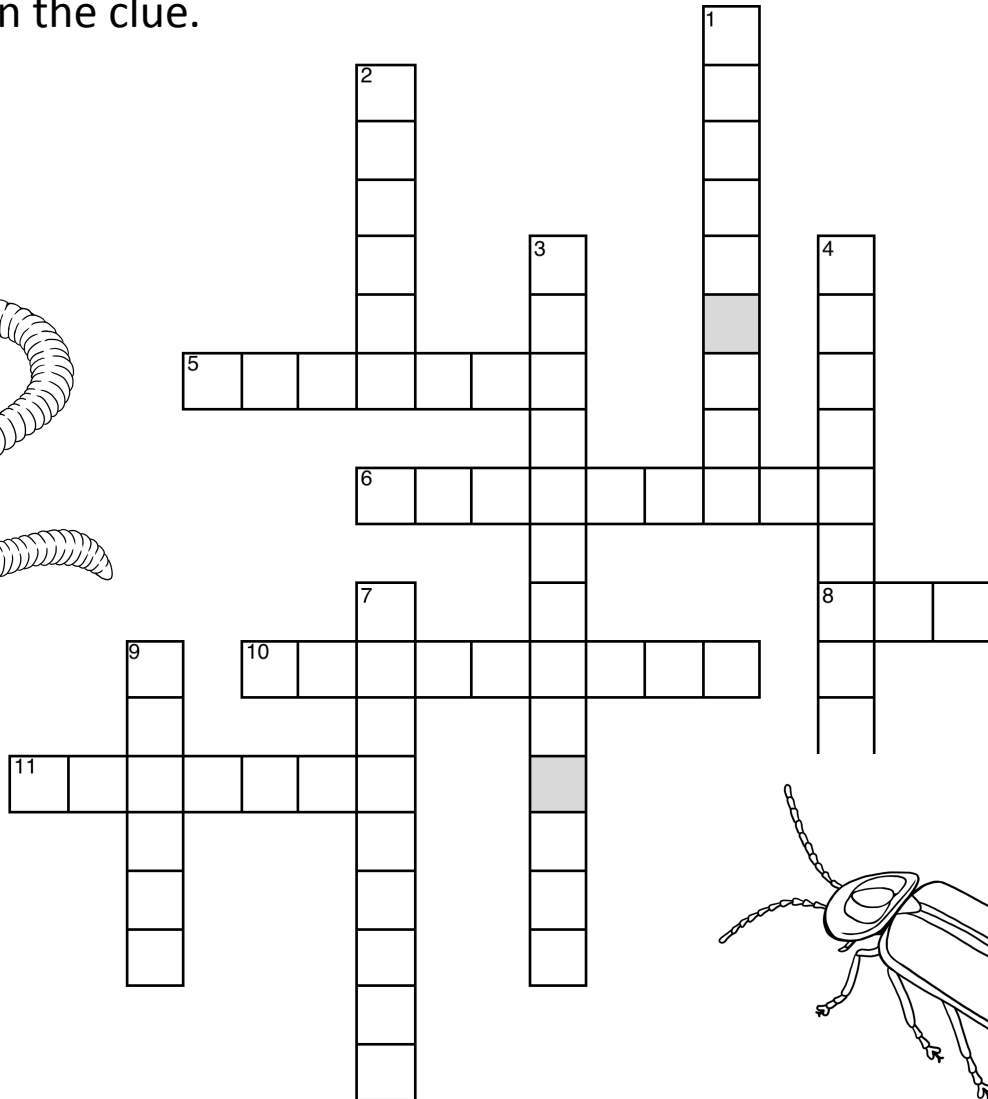
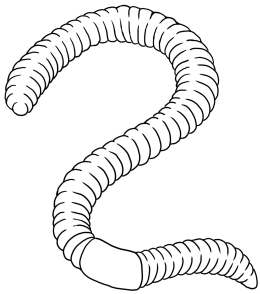


# Who Am I?

Read the descriptions below taken from *The World Never Sleeps* to figure out what creature is being described. Then circle the verb in the clue.



## Across

5. Eats pesky aphids
6. Hunts pests
8. Flies away to escape a predator
10. Breathes through gills when it first emerges
11. Chirps to find a mate

## Down

1. Collects nectar
2. Lays eggs on the surface of the water
3. Lights up to attract a mate
4. Emerges from a chrysalis
7. Turns apple into soil
9. After eating, it gathers up its web